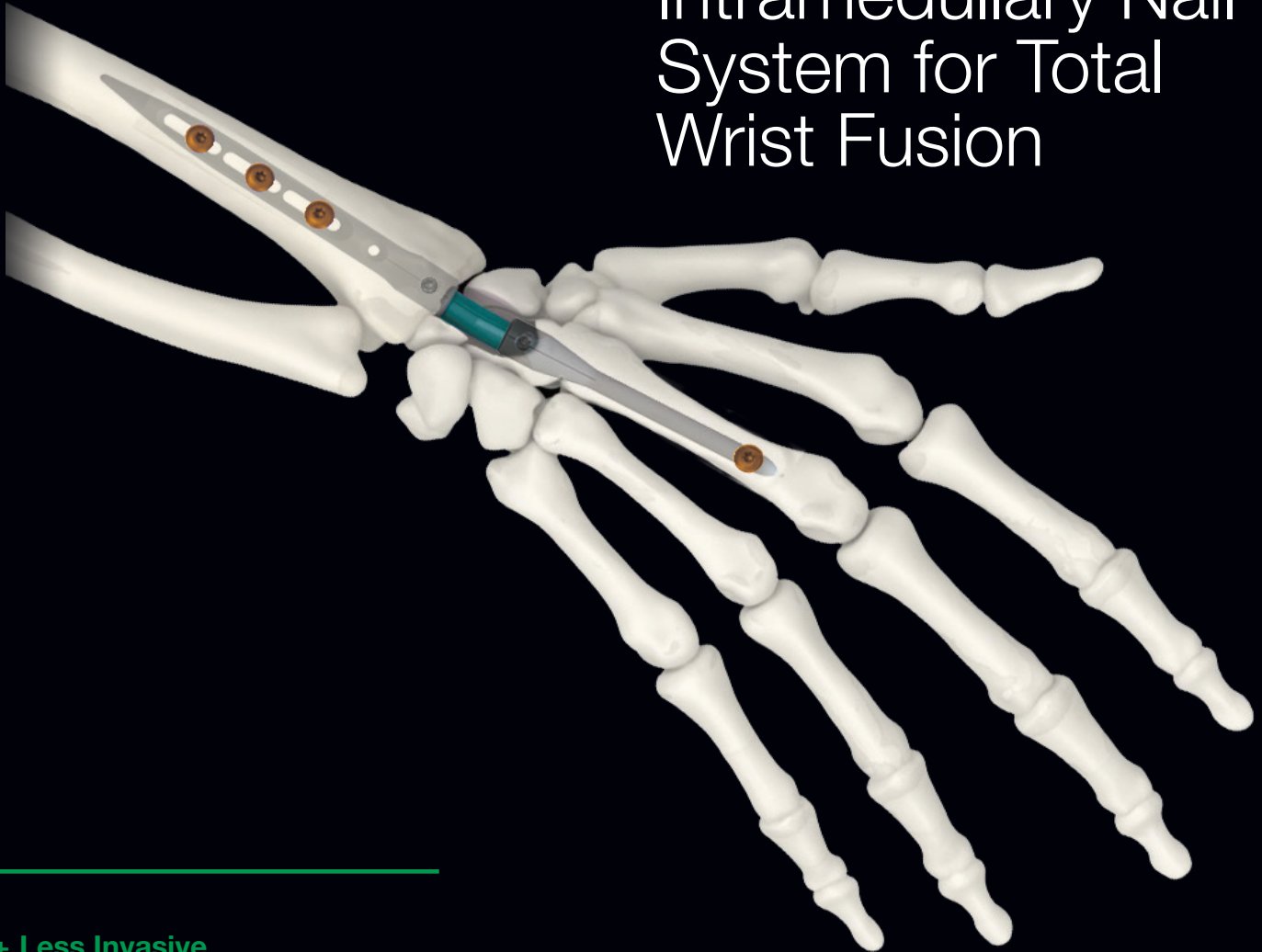


# IMPLATE<sup>®</sup>

## wrist arthrodesis nail

by skeletal dynamics

The First  
Intramedullary Nail  
System for Total  
Wrist Fusion

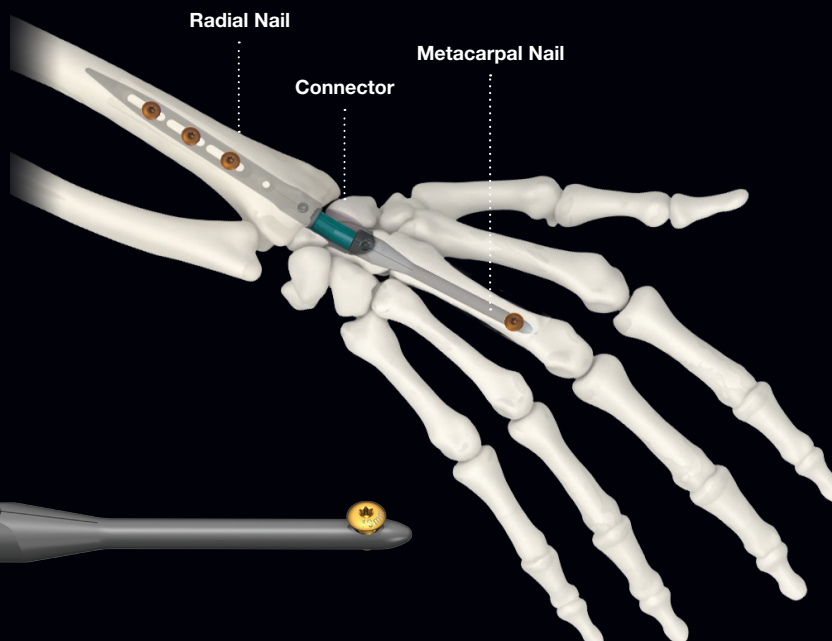


- + Less Invasive
- + Strong and Stable Construct
- + Precise Anatomic Alignment

# IMPLATE<sup>®</sup>

## wrist arthrodesis nail

by skeletal dynamics

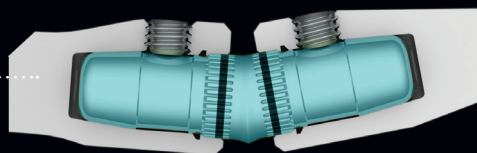
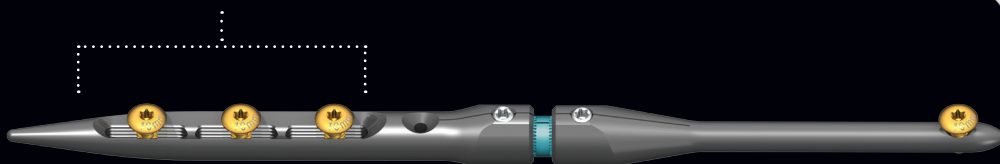


### Uncortical Locking Screws

+ for nail stability

### Threaded Slots

+ Provide up to 8mm of translation for compression

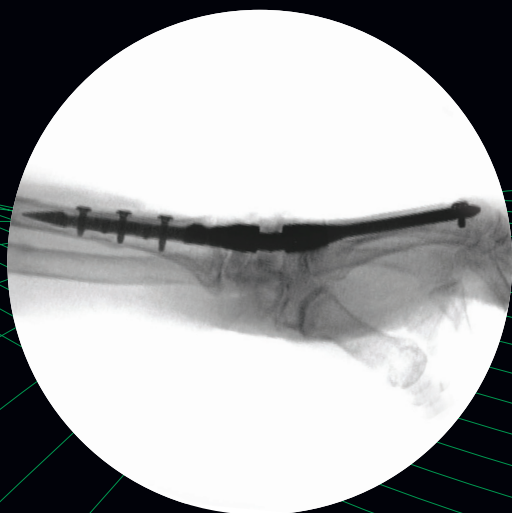


### MicroSplines

+ Allow for rotational adjustments  
+ Provide construct stability

### Positional Adjustments

+ Rotation  
+ Flexion-Extension  
+ Radio-Ulnar Deviation



STRONG AND STABLE CONSTRUCT

